

North Point



Residence
St Paul's Bay

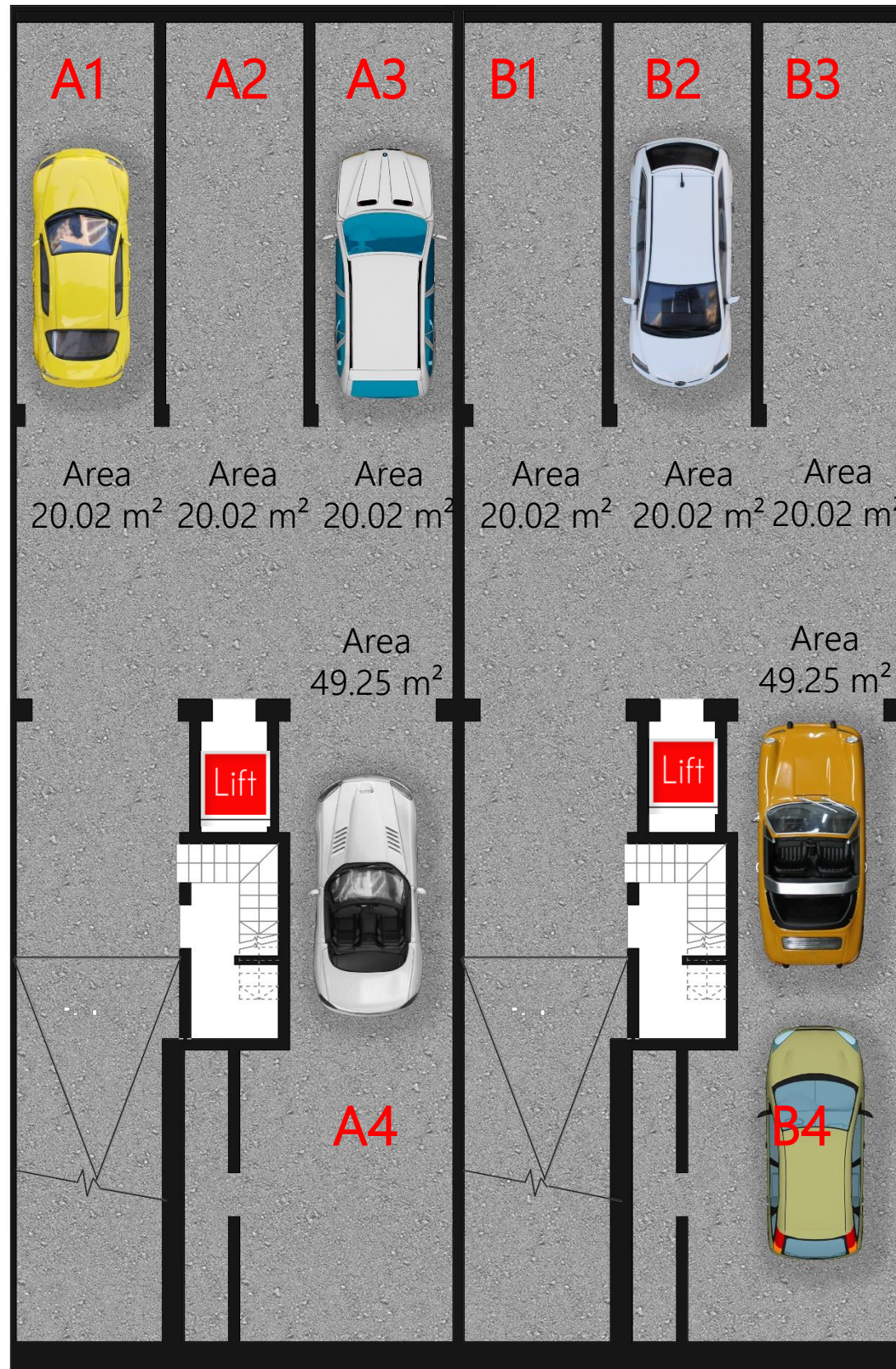




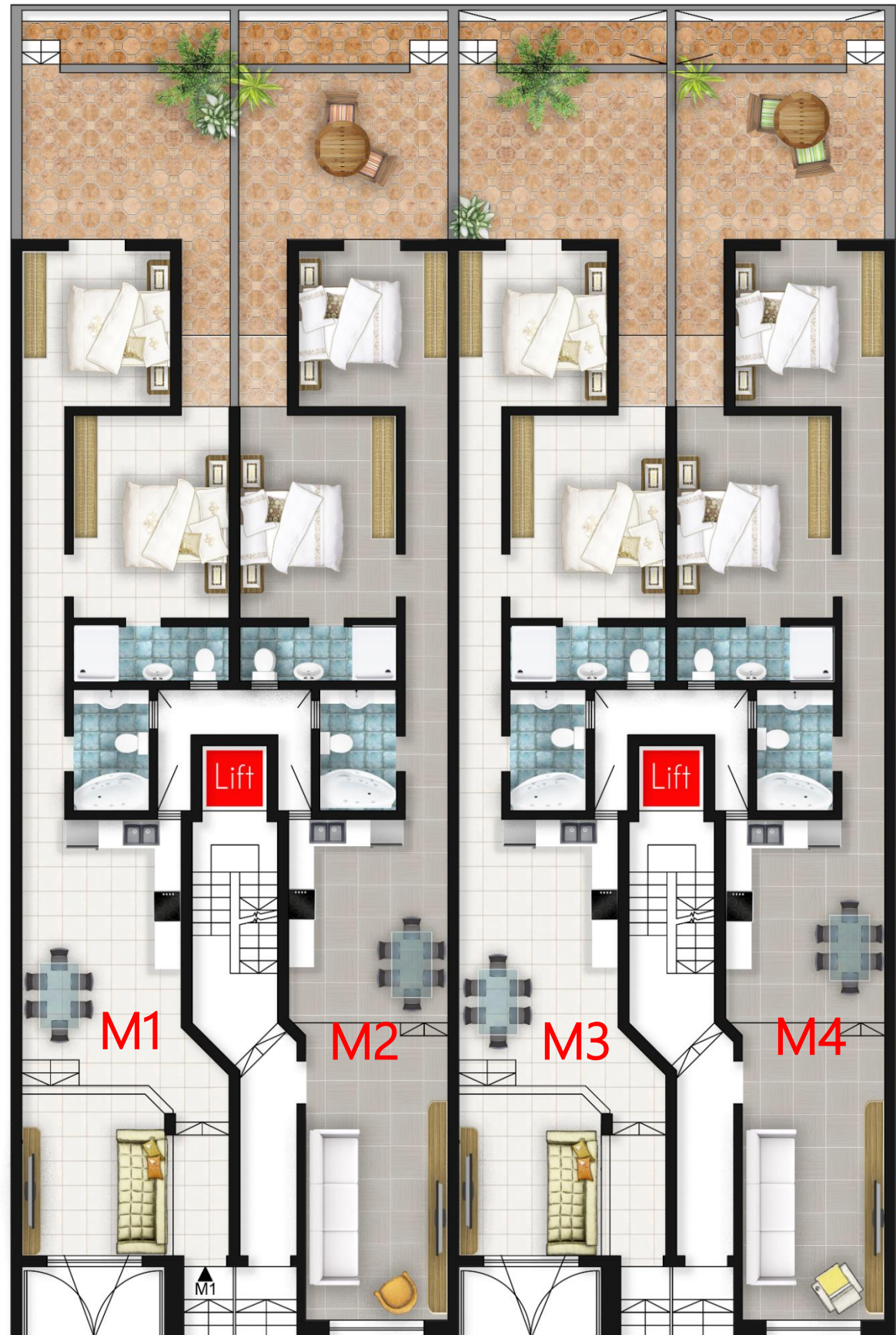
Location at St Paul's Bay



Triq Isouard, Saint Paul's Bay



Level 0



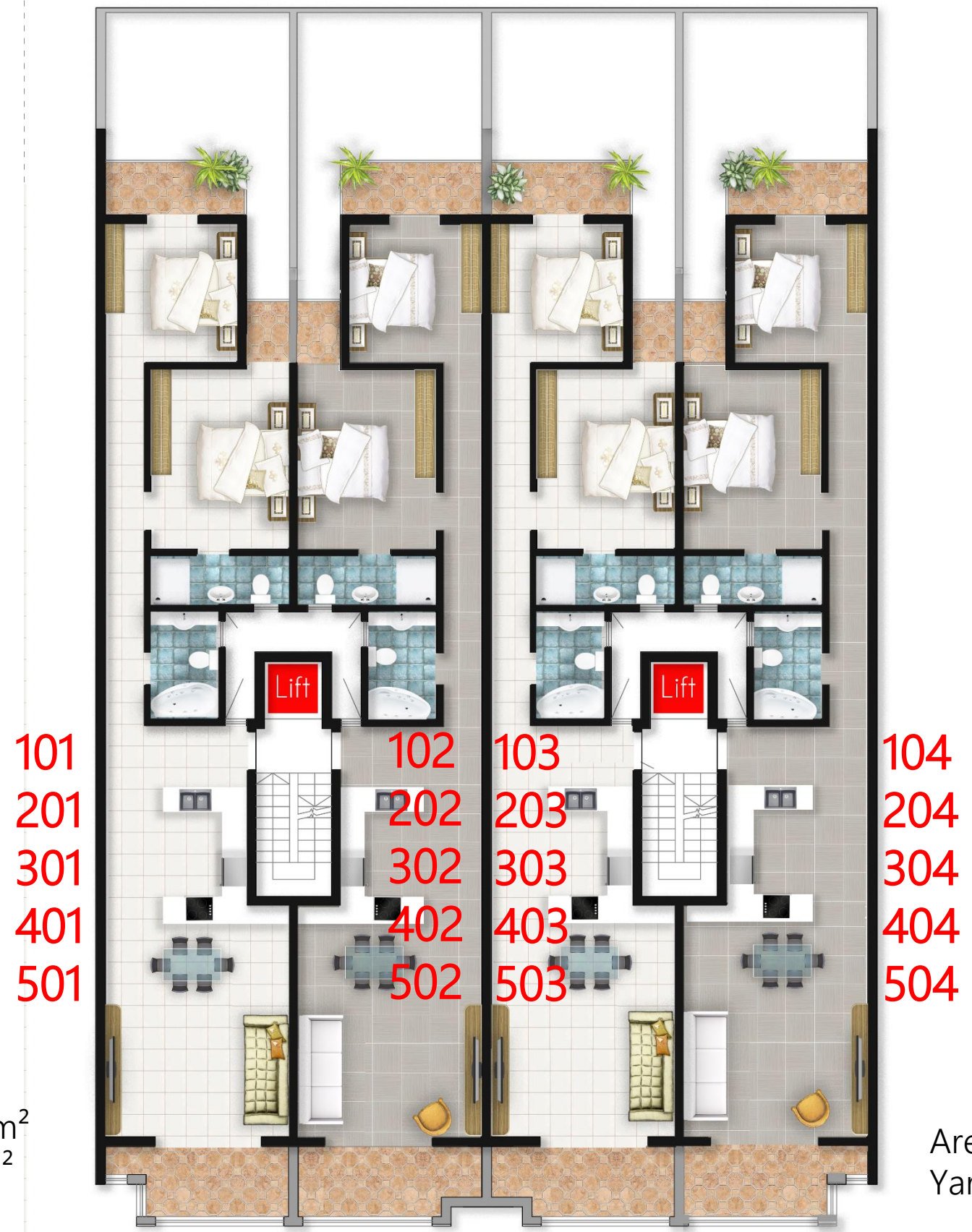
Area 89.45m²
Yard 27.80m²

Area 89.45m²
Yard 27.80m²

Area 85.45m²
Yard 26.55m²

Area 85.45m²
Yard 26.55m²





Area 93.00m²
Yard 15.75m²

Area 93.00m²
Yard 15.75m²

Plan Level 1-5

Plan Level 1-5 ISOUARD STREET

Area 89.00m²
Yard 14.50m²

Area 89.00m²
Yard 14.50m²



Proposed Penthouse level



Area 77.00m²
Yard 21.35m²

Area 77.00m²
Yard 21.35m²

Area 72.75m²
Yard 20.30m²

Area 72.75m²
Yard 20.30m²



3d External View



3d External View



3d External View



3d External View



Photomontage



Master Bedroom





Spare Bedroom



Main Bathroom



Open Plan



Open Plan



Open Plan



Open Plan



