

Attard ●

PRESTON COURT



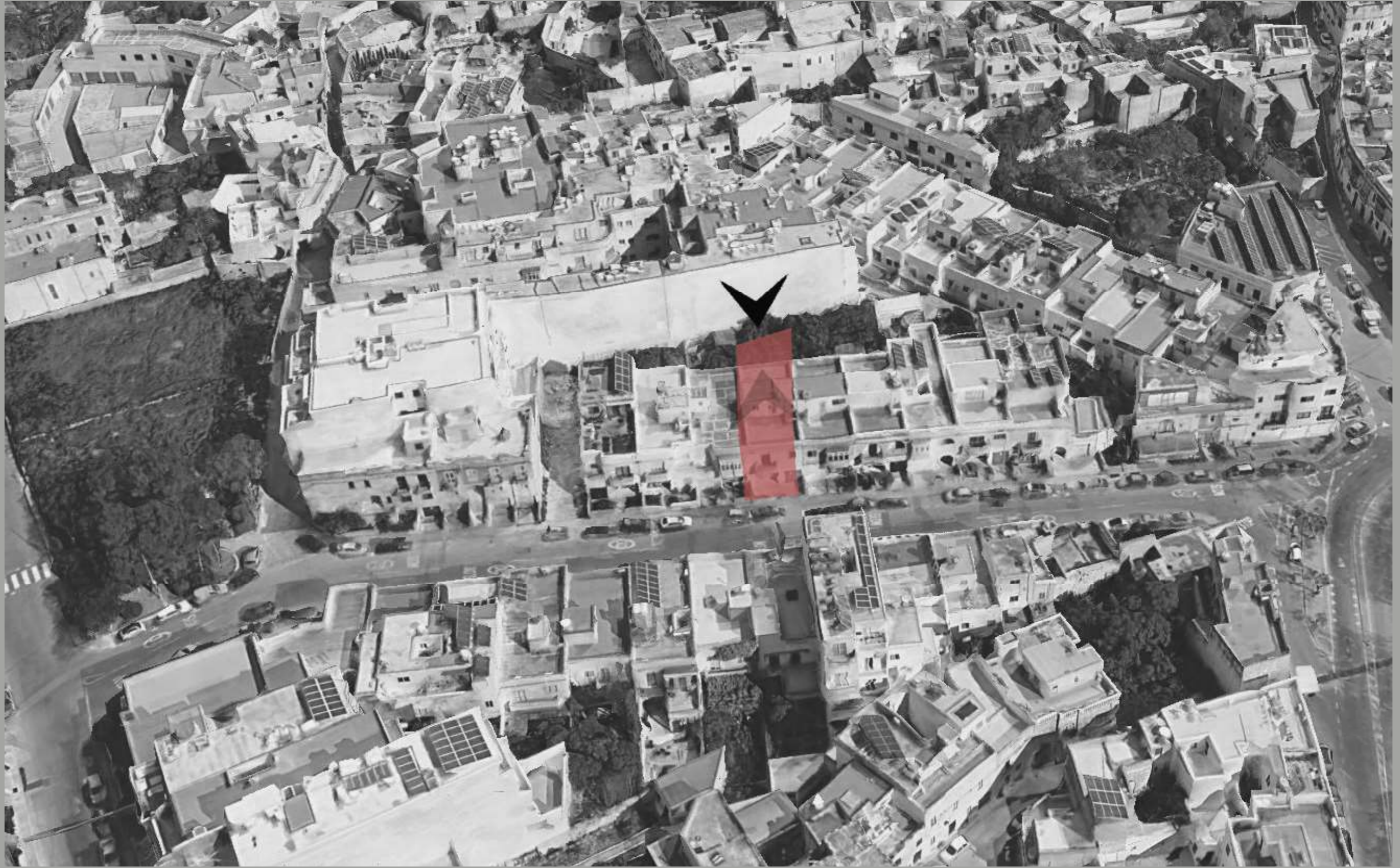
5 floors of Luxury Living

1 Maisonette
6 Apartments
1 Penthouse

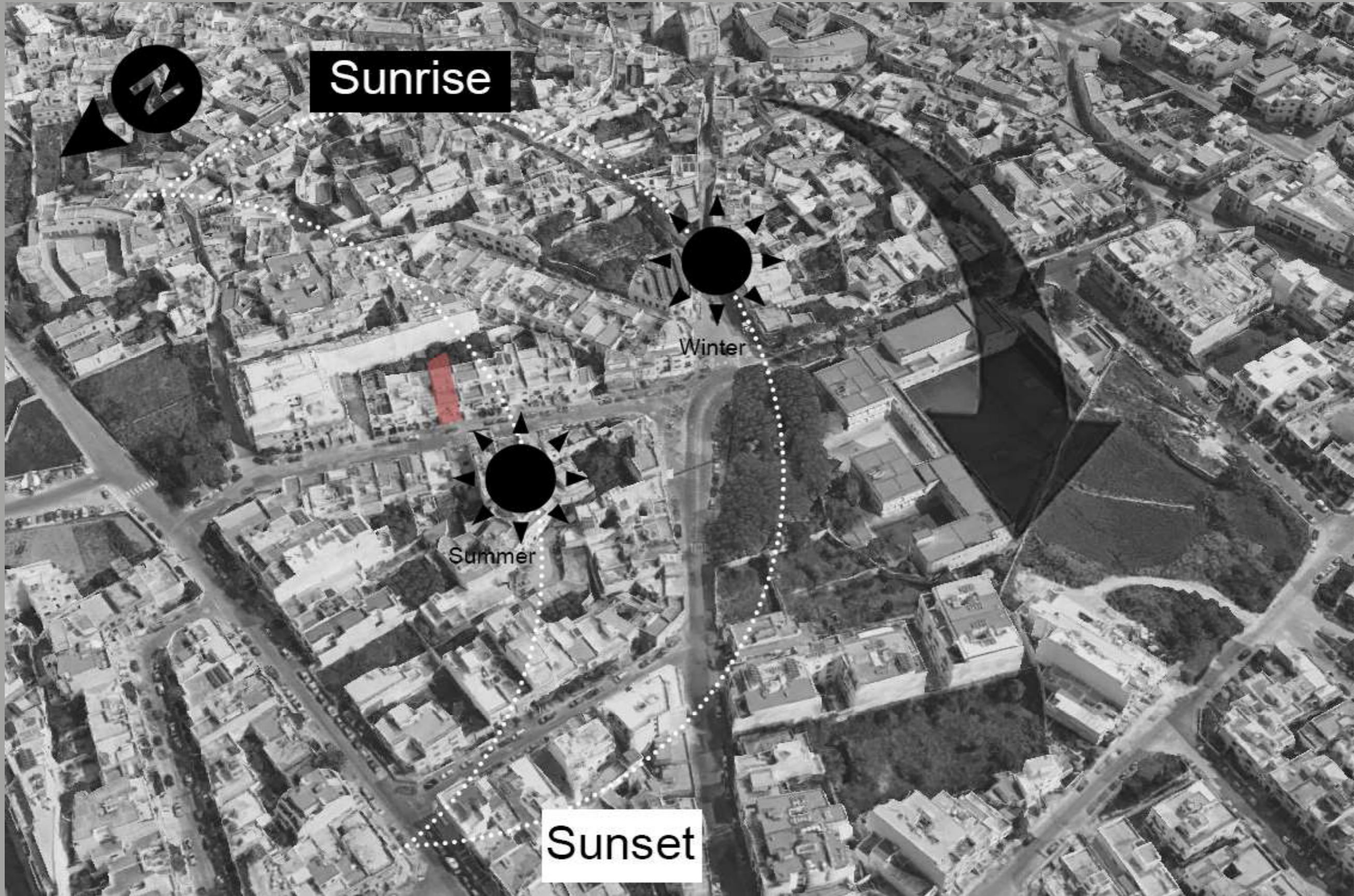
Index.

Location Information	1- 4
Basment Level	5
Maisonette Level	6 - 13
1st 2nd 3rd Level	15 - 20
Penthouse Level	21 - 31

LOCATION



● Triq Ant.Schembri

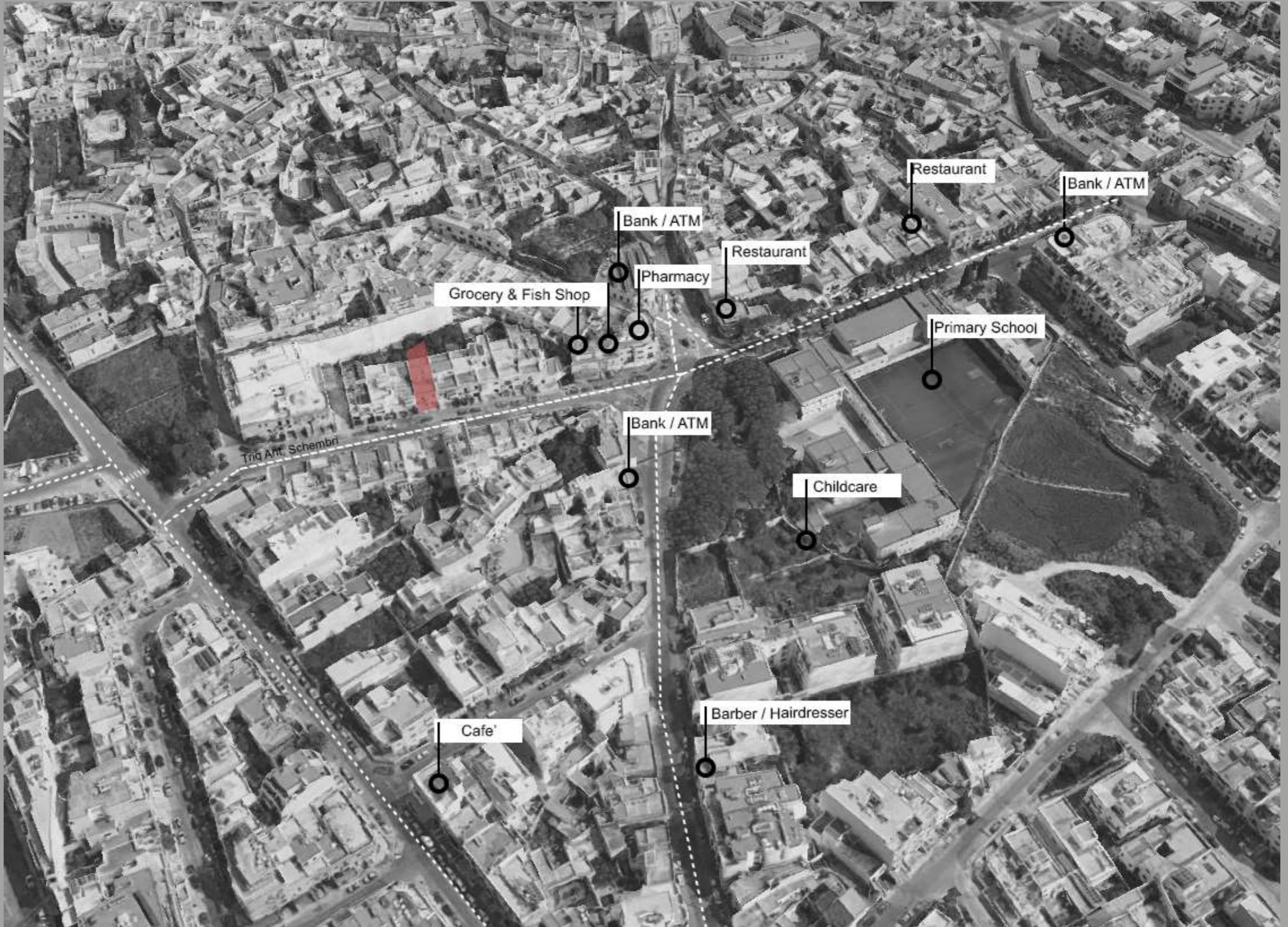


Sun Path

Triq Ant.Schembri ●

Amenities

● Local



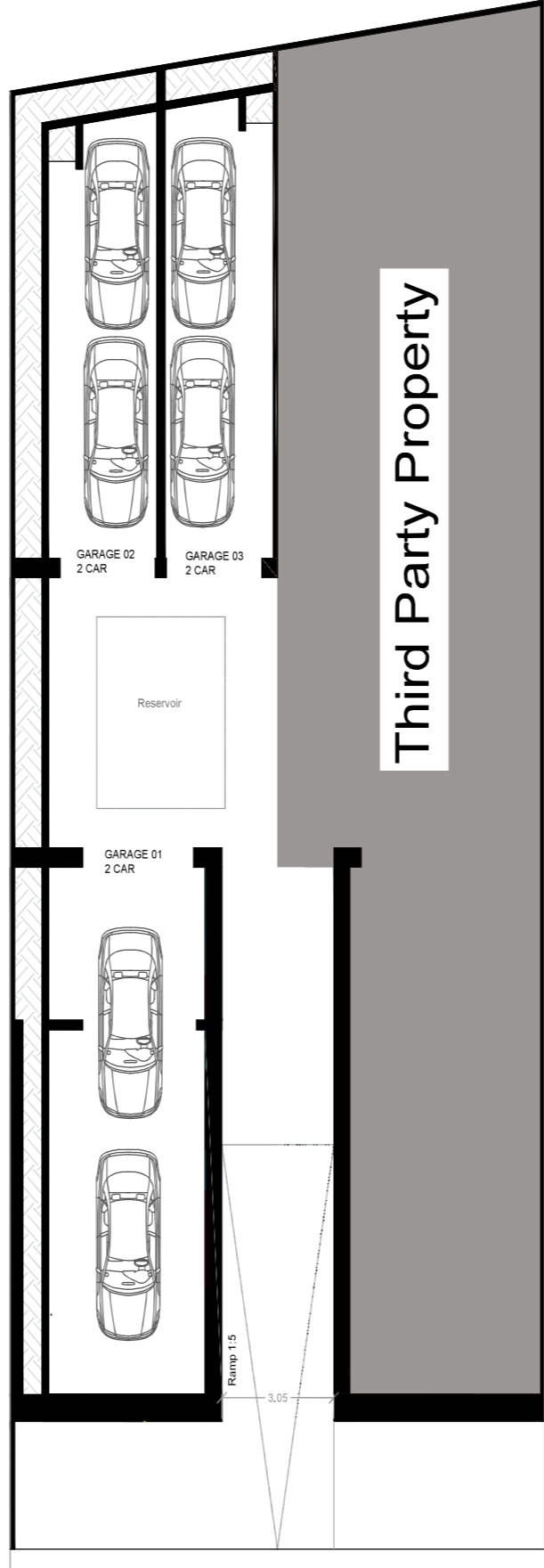


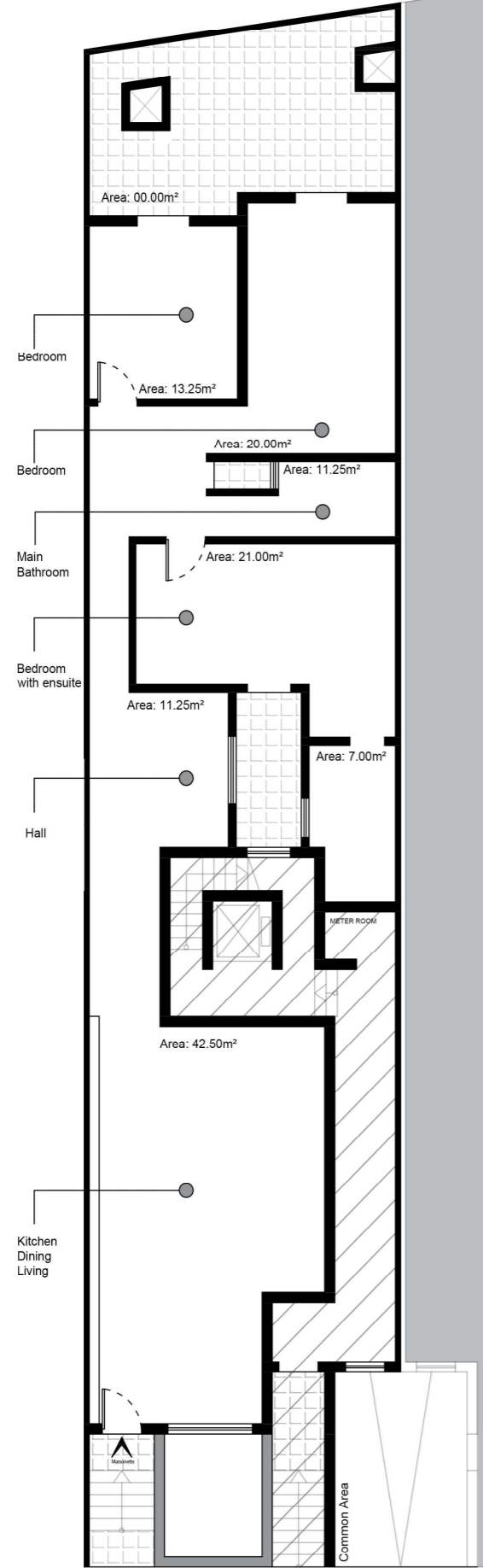
Public ●

Transport

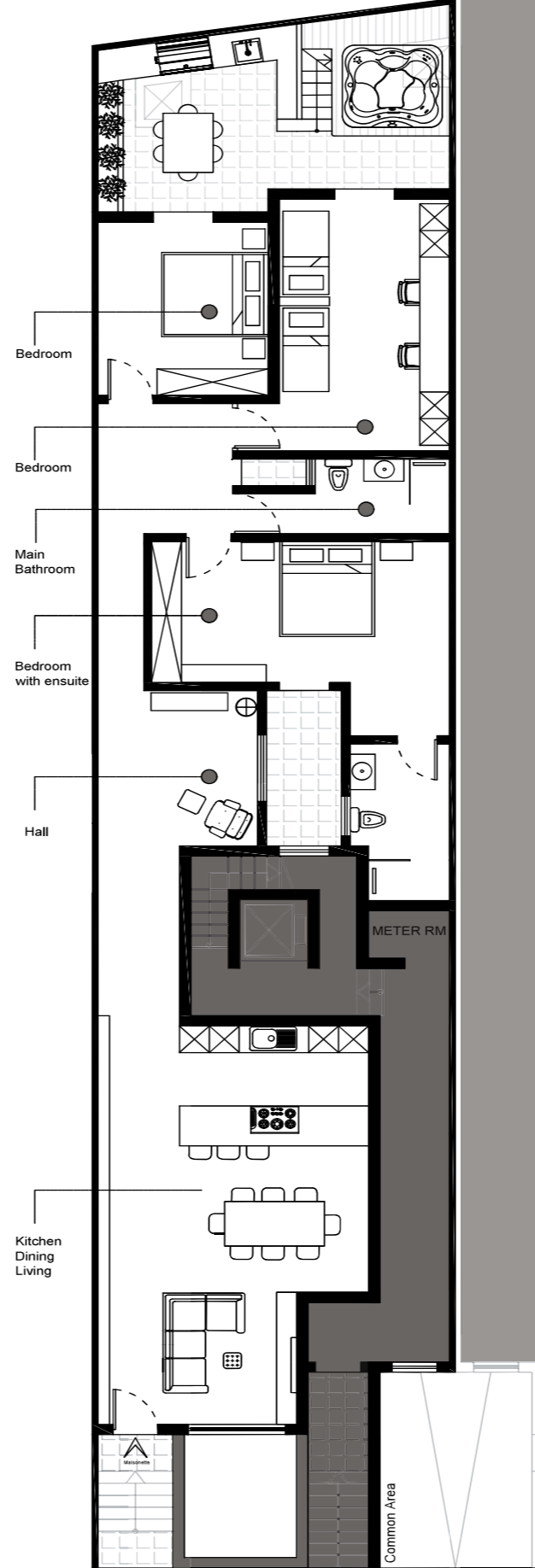
Level -1

● Basement





Third Party Property



Third Party Property

O
P
R
E
N
D
I
A
N
M
A
I
S
O
N
E
T
T
E



● Maisonette



Maisonette ●

OPRENNBLAN



HALL

● Maisonette



Main Bedroom

Maisonette ●

Spare Bedroom

● Maisonette





Spare Bedroom

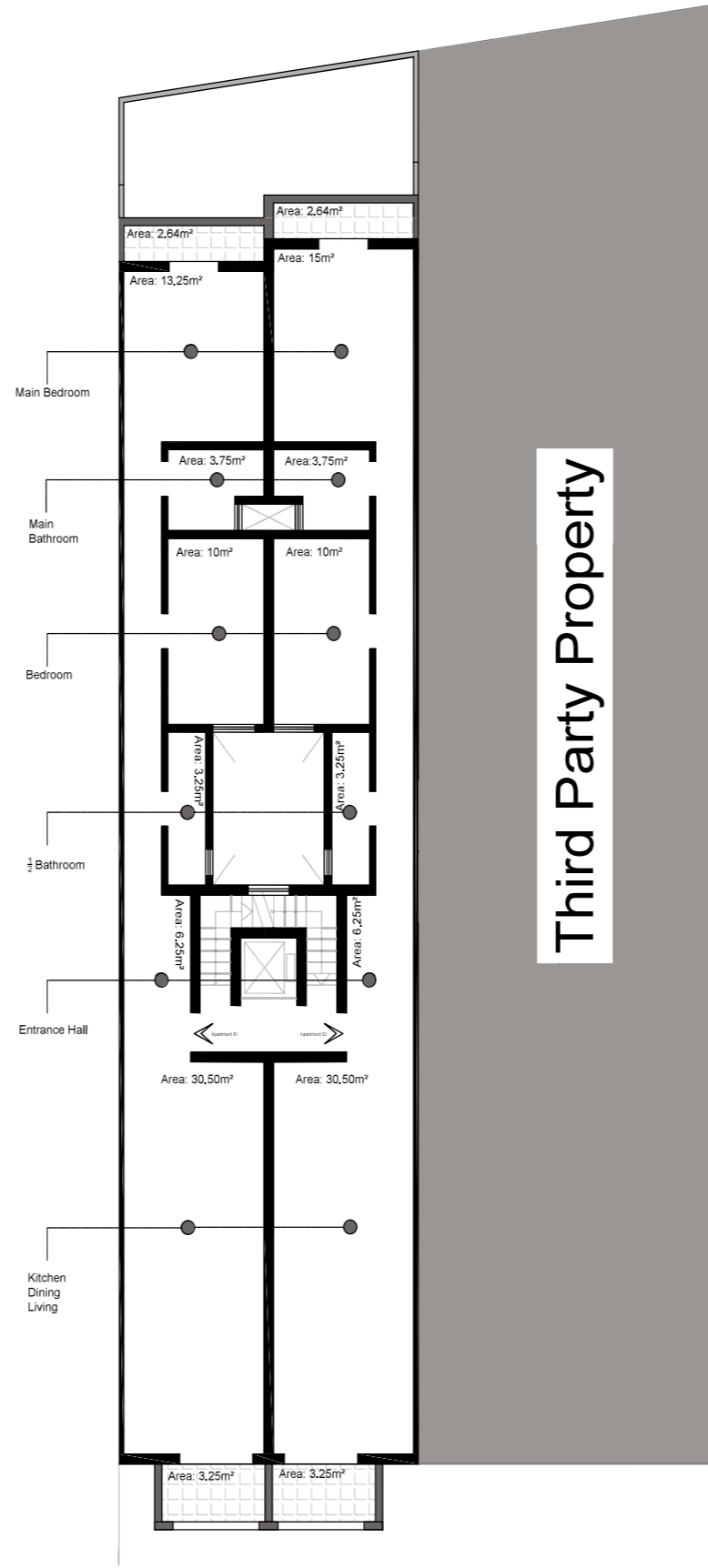
Outdoors

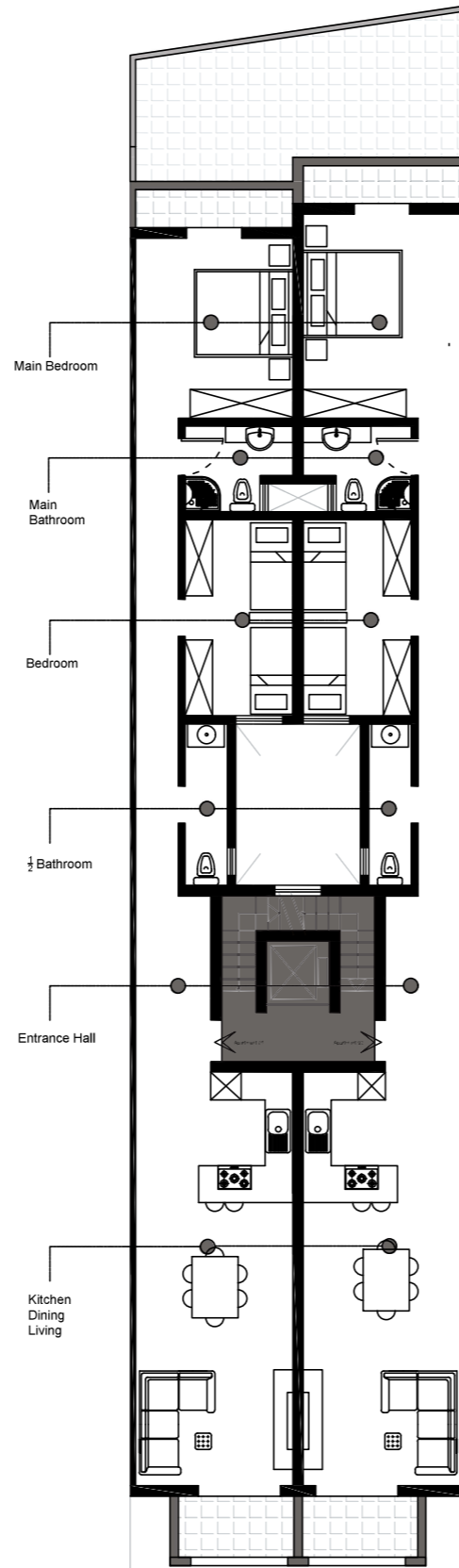


● Maisonette

Level 1, 2 & 3

● Typical Apartment





Third Party Property

Kitchen & Dining



● Typical Apartment



Typical Apartment ●

Living Room

Spare Bedroom



● Typical Apartment

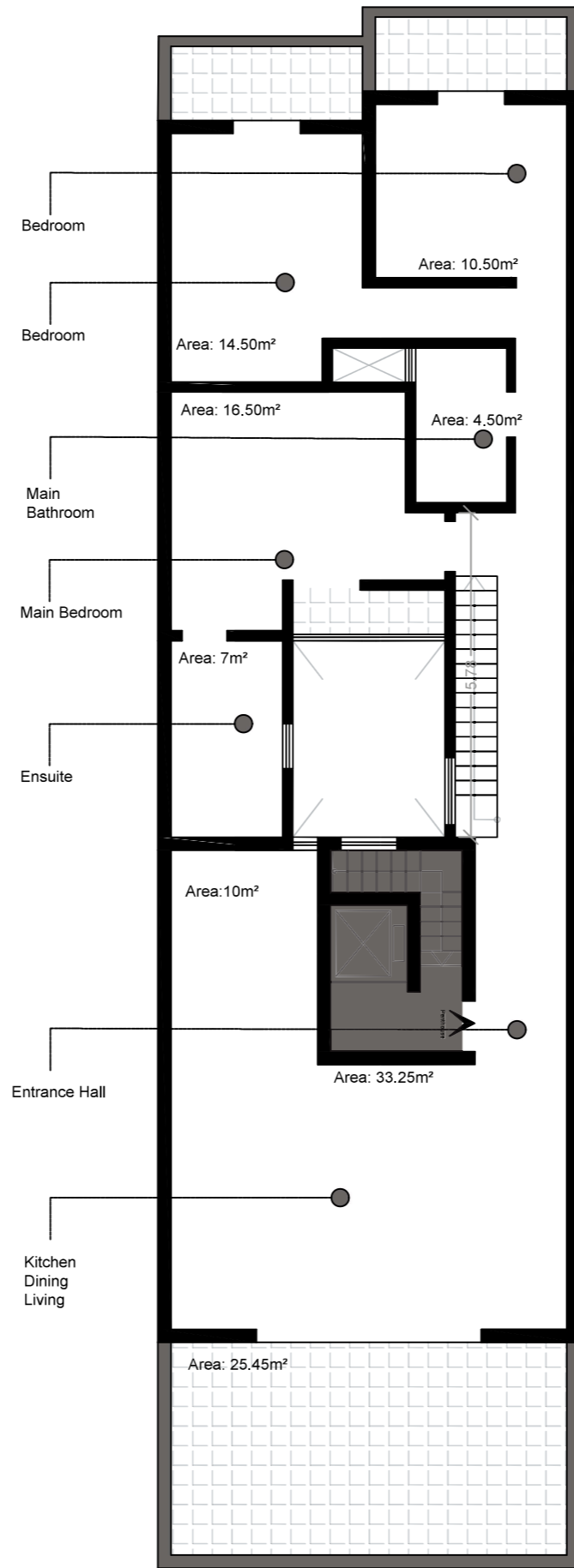


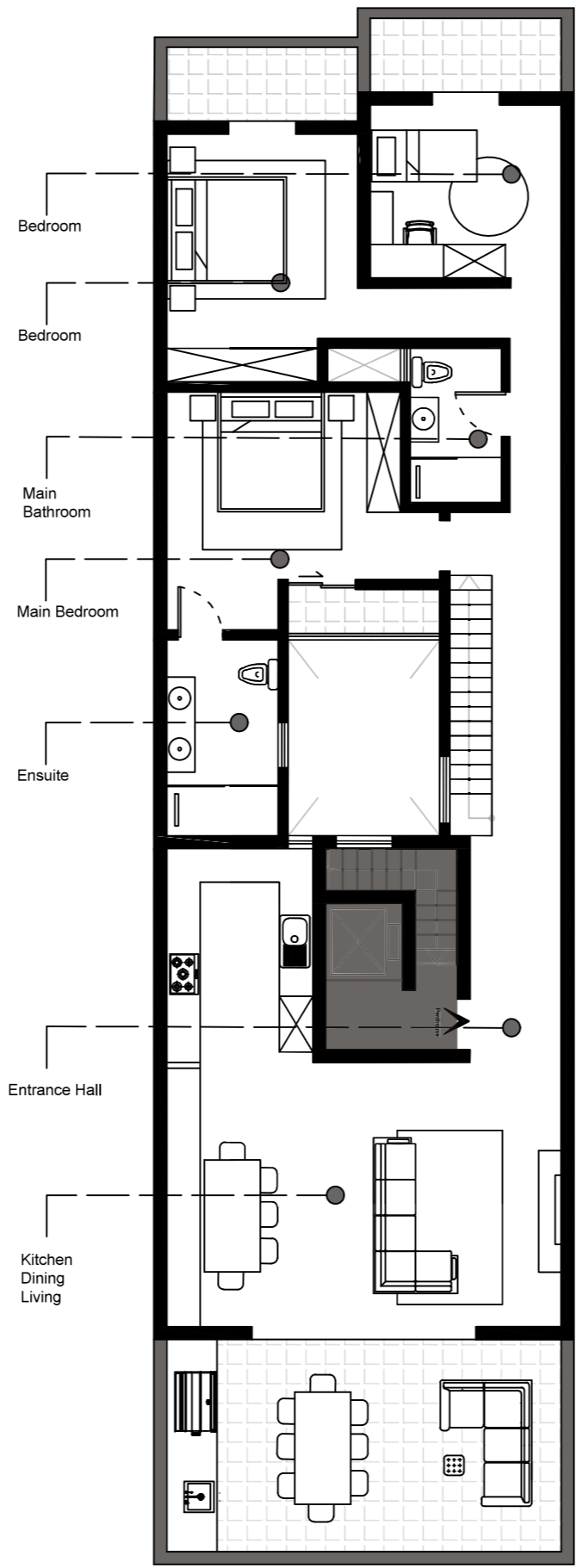
Square Bedroom

Typical Apartment ●

Level 4

Penthouse





Open Plan



● Penthouse



Penthouse ● Open Plan

Penthouse ●

Open Plan

● Penthouse





Penthouse

Outdoors

Entrance Hall

● Penthouse





Penthouse ●

Main Bedroom

Spare Bedroom

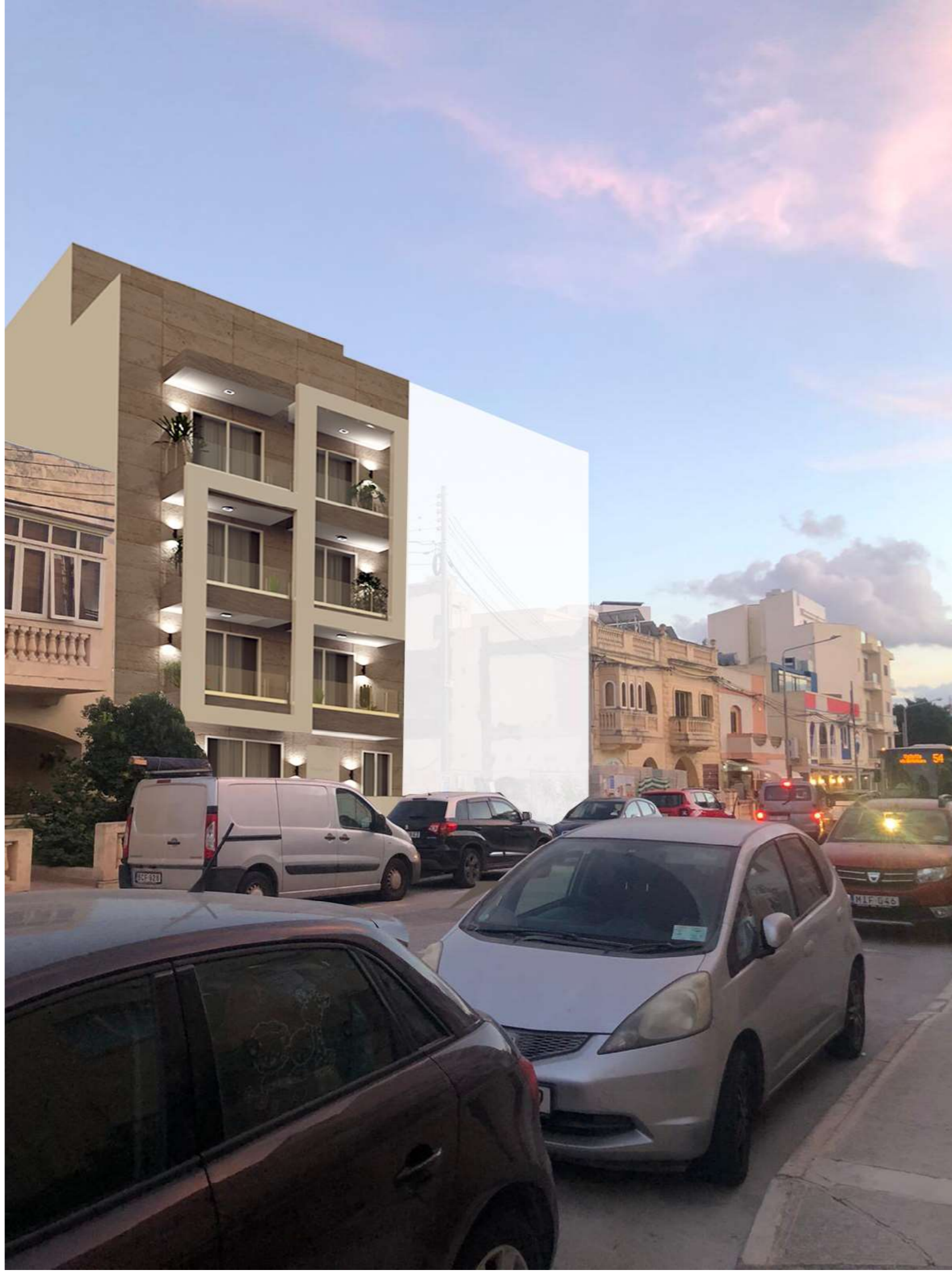


● Penthouse



Penthouse ● Spare Bedroom

Penthouse ●





Tal-Balal Road, Tax-Xwieki, Għargħur, Malta
(+356) 21 424 771/2/3 or (+356) 99492584